



The Oyster is a rugged, waterproof, cellular GPS tracking device designed for tracking non-powered, exposed assets where super-long battery life is essential.



Cost effective battery powered asset location for up to 4 years



...and easily switch configuration over-the-air including Recovery Mode

Long battery life
Compact. Simply "place 'n trace"
Robust and weather-proof (IP67)

KEY FEATURES

- Up to 4 years once daily location
- Up to 1 year detailed tracking
- IP67 water & dust proof
- Rugged, robust and low-profile
- Integrated accelerometer
- Switch from "locate" to "track" O.T.A.
- Compact & lightweight
- Unauthorised movement alert
- Battery status & low battery alert

WORKS FOR...

- Vehicles, Trucks & Trailers
- Boats & Jet-skis, Quad-bikes
- Traffic Signage & Lighting Rigs
- Motorbikes & Scooters
- Generators & Compressors
- Agricultural Equipment
- Shipping Containers & Skips
- Caravans & Campervans
- Mining Equipment

APPLICATIONS

- Non-powered asset tracking
- Vehicle and fleet tracking
- Shipping containers & freight
- Trailers and mobile assets
- Logistics management
- Mining & construction equipment
- Locate & recover lost equipment
- Anchoring and security of assets
- Insurance & logistics applications

Low cost, long-life, IP67 GPS / GLONASS asset location

OYSTER

2G/3G Cellular

IP67 Waterproof, Dustproof & Rugged

The housing is made of sturdy ABS/Polycarbonate plastic to survive bumps and knocks and is UV stabilised to survive many years in the sun, exposed to weather.

Its low-profile makes it easier to mount in the corrugation on containers or to conceal on the underside of a trailer.

No Install Required

Simply secure the device in place and begin tracking

Adaptive Tracking

Adaptive-Tracking technology enables the accelerometer and GPS data to be used intelligently to detect trip movement and to send frequent live updates, as well as to scale the update rate down to once per day if the asset is stationary in order to preserve battery life

3D Accelerometer

The 3 axis accelerometer allows the Oyster to 'sleep' in an ultra-low power state yet still wake-up when movement occurs.

Easy Configuration

The Oyster can have settings remotely changed over-the-air including switching to Recovery Mode allowing for more frequent position updates.

MECHANICAL FEATURES

Dimensions (mm)	L 100 x W 65 x H 19
Weight	160 grams incl. batteries
Housing	ABS/Polycarbonate plastic IP67 water & dust proof
Fitment	Screw holes & strap slots
Operating temp range	-30°C to +70°C

POWER

Batteries	3 x AA size off-the-shelf Lithium consumer batteries
Sleep Current	10uA (micro-amps)

CONNECTIVITY

Network	2G/3G (micro-SIM)
Configuration	Over the Air configuration
APN Setup	Auto APN (pre-loaded list) or by Text message

GPS TRACKING

UBLOX GPS Module	High sensitivity Assisted GPS receiver, 72 channel
GPS / GLONASS	Concurrent GPS/GLONASS
Antenna with Low noise GPS amplifier	Boosted by low-noise amplifier (LNA) allows operation in "urban canyons" and container stacks

SMARTS

Recovery Mode	Switch from Daily Locate to frequent Tracking over-the-air
AssistNow Offline	Predicts satellite locations • reduce the time-to-first-fix • improves performance in 'urban canyon' or forested environments.
Black box data <small>*Currently Cellular Only</small>	The Oyster keeps a log of the last 20,000 positions.

OTHER FEATURES

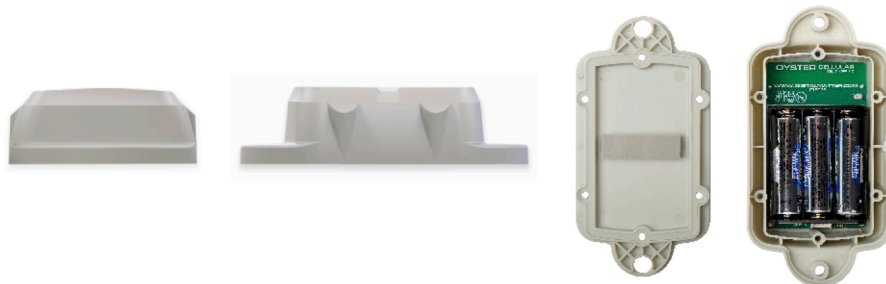
3D Accelerometer	Enables quick wake from ultra-low power state
Internal memory	Flash 25,000 records

SIZE COMPARISON

OYSTER



REMORA



 **GPS**
FLEET MANAGEMENT SOLUTIONS

www.gpsfms.com